

Conveyor system F65

F45

FT

FS

FL

FLP

F65

FM

FMP

F85

F85P

FH

FK

FKP

FB140

FB175

FB295

SPIRAL

FW

FLX

FMX

FHX

FBX175

FBX295

ACC

CA

FC

TOOL

IDX

Contents

Chains 3

Conveyor beam 5

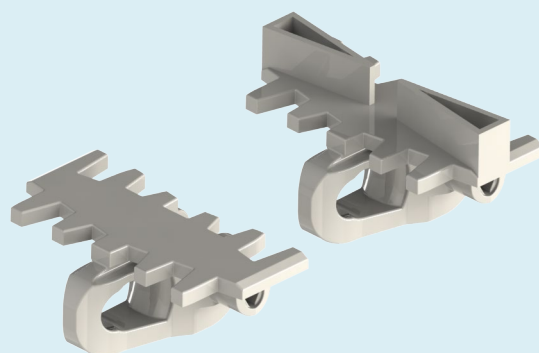
End drive units 7

Idler units 9

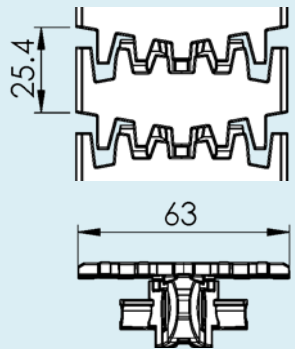
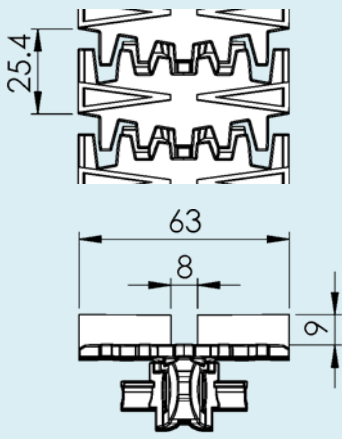


Horizontal wheel bends 11

Vertical bends 12

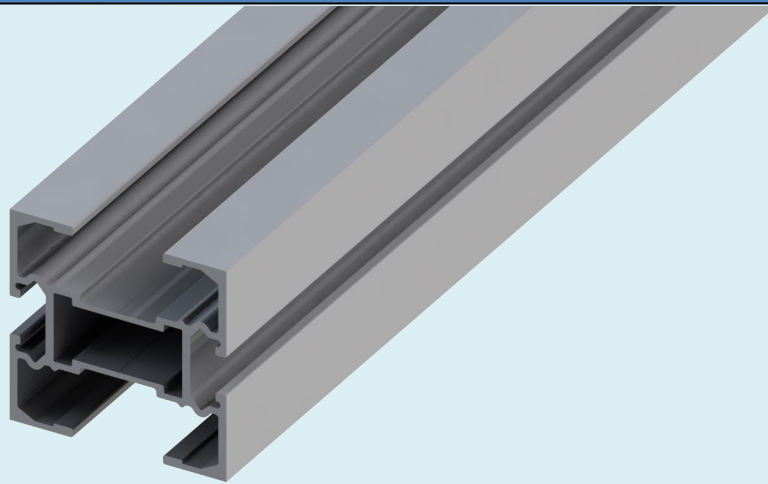
Chains



Chain

			F45	
<i>Plain chain</i>			FT	
FLTP 5A65	Plain chain Length 5 m		FS	
F5115333	Plain link		FL	
			FLP	
			F65	
			FM	
<i>Cleated chain</i>			FMP	
Cleated chain Type A			F85	
FLTF 5A65X9A	H=9		F85P	
FLTF 5A65X12A	H=12		FH	
FLTF 5A65X17A	H=17		FK	
FLTF 5A65X30A	H=30		FKP	
Cleated link			FB140	
F5116842	H=9		FB175	
F5116827	H=12		FB295	
F5116836	H=17		SPIRAL	
F5116837	H=30		FW	
			FLX	
<i>Tools and accessories</i>			FMX	
FTTT 11X17	Plastic pivot		FHX	
FTTD 4.5X30	Steel pin		FBX175	
FLMJ 4	Pin insertion tool		FBX295	
FDSS 450	Silicone-based lubricant		ACC	
				CA
				FC
			TOOL	
			IDX	

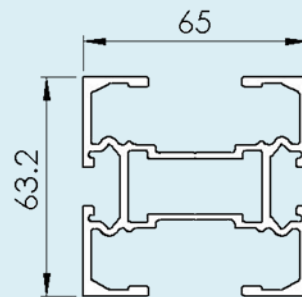
Conveyor beam



Beam

FLCB 3A65

Length 3 m



Slide rail

Length 25 m

FLCR 25 HDPE Black
FLCR 25U UHMW White
FLCR 25P PVDF White
FLCR 25POK POK
FLCR 25H HDPE+PA6 Gray
FLCR 25E UHMW conductive Black

FLAH 4X6A Aluminium rivet

FLAG 5 Plastic screw

FLCR 25/FLCR 25E



FLCR 25U/FLCR 25P
FLCR 25POK



FLCR 25H



FLAH 4X6A



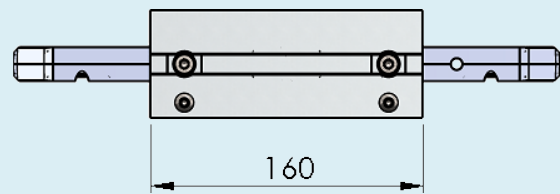
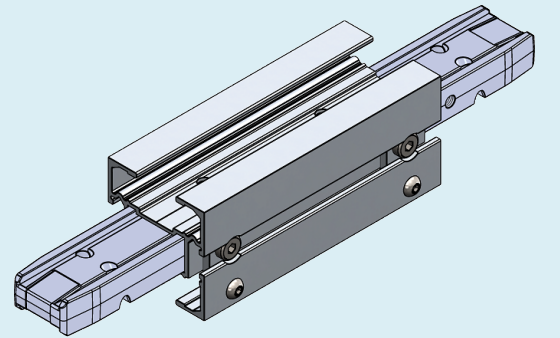
FLAG 5



Conveyor beam

Beam section for chain installation

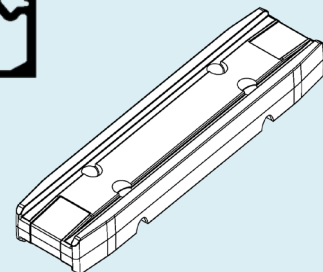
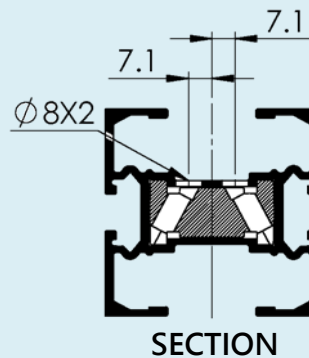
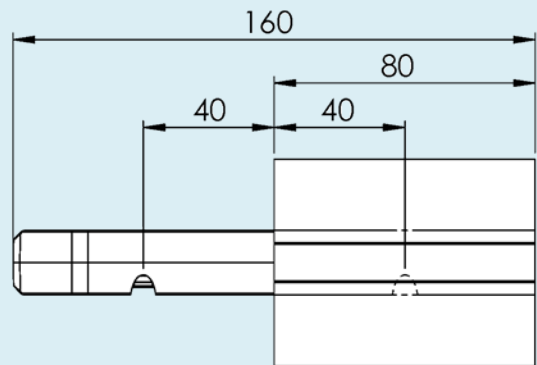
FLCC 160A65



Connecting bracket kit with set screws

FLCJ A65

Length 160



FLCJ A65

F45

FT

FS

FL

FLP

F65

FM

FMP

F85

F85P

FH

FK

FKP

FB140

FB175

FB295

SPIRAL

FW

FLX

FMX

FHX

FBX175

FBX295

ACC

CA

FC

TOOL

IDX

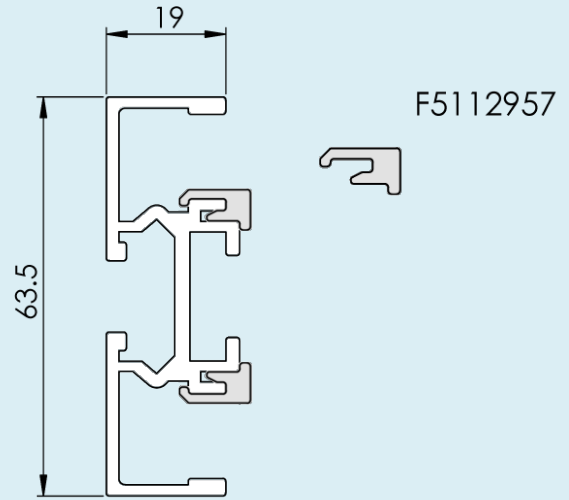
Half beam Length 3 m

FLCB 3A65H

Support rail Length 3 m

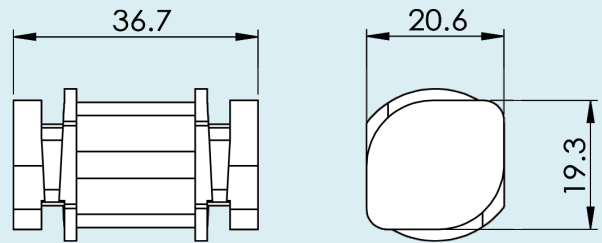
F5112957 HDPE+PA6 Gray

*Support rails always included in the delivery of all F65 plain bend

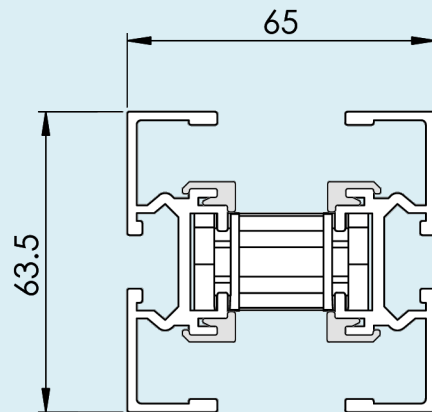


Beam clip

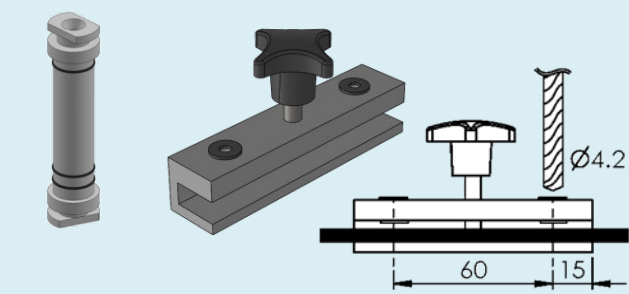
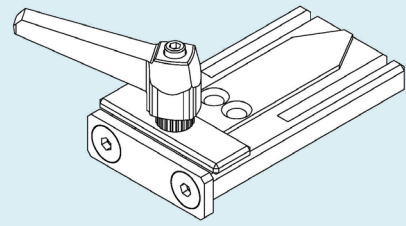
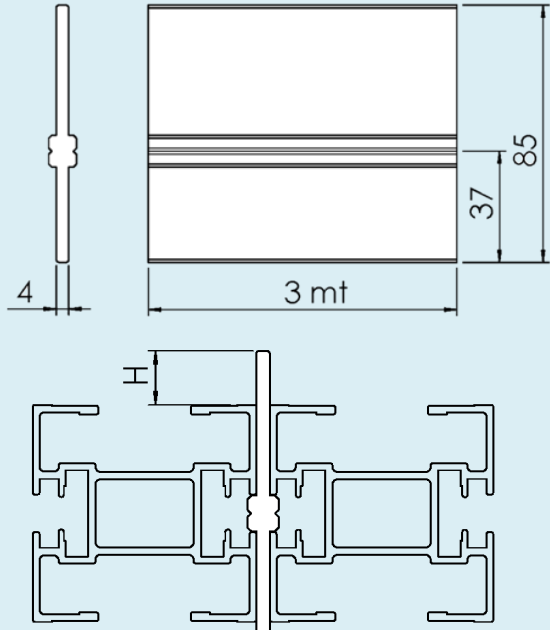
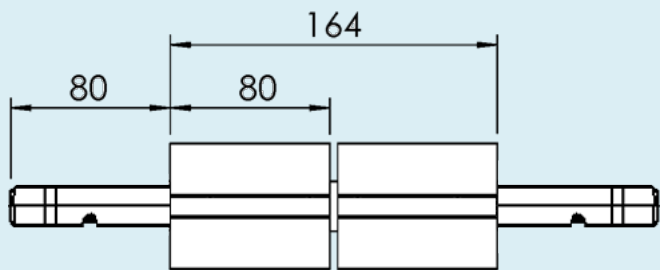
F5116103



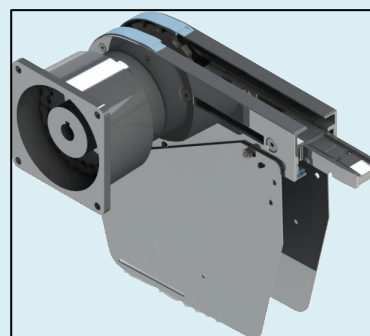
Split Conveyor beam assembled
Length 3 m



Conveyor beam

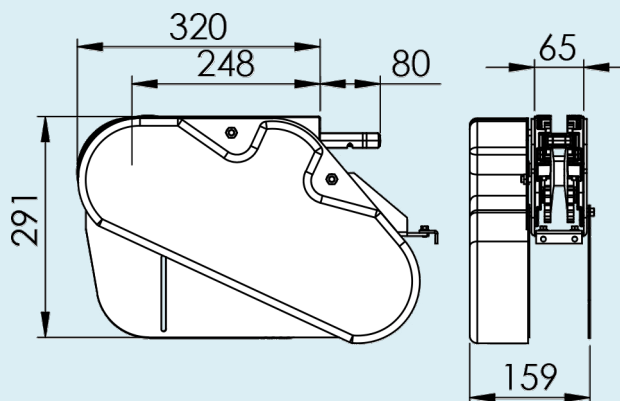
<p>F3920500 Drill fixture for slide rail</p> <p>FLMR 140 Mounting tool</p>	<p>FLMR 140 F3920500</p> 	<p>F45</p> <p>FT</p> <p>FS</p> <p>FL</p> <p>FLP</p> <p>F65</p> <p>FM</p> <p>FMP</p>								
<p>Drill fixture</p> <p>F5116761</p> <p>For the connection bracket hole pattern</p>		<p>F85</p> <p>F85P</p> <p>FH</p> <p>FK</p> <p>FKP</p>								
<p>Beam spacer</p> <p>FLCD 3 Aluminium, anodized Length 3 m</p> <table border="1" data-bbox="295 1377 790 1624"> <tr> <td>FS</td> <td>H=16.0</td> </tr> <tr> <td>FL/F65</td> <td>H=15.9</td> </tr> <tr> <td>FM/F85/FH</td> <td>H=10.5</td> </tr> <tr> <td>FK</td> <td>H=0.5</td> </tr> </table>	FS	H=16.0	FL/F65	H=15.9	FM/F85/FH	H=10.5	FK	H=0.5		<p>FB140</p> <p>FB175</p> <p>FB295</p> <p>SPIRAL</p> <p>FW</p> <p>FLX</p> <p>FMX</p> <p>FHX</p> <p>FBX175</p> <p>FBX295</p>
FS	H=16.0									
FL/F65	H=15.9									
FM/F85/FH	H=10.5									
FK	H=0.5									
<p>Articulated beam section</p> <p>FLCH 5A65V Articulated beam section, vertical</p> <p>Slide rail: see "Conveyor beam"</p>		<p>ACC</p> <p>CA</p> <p>FC</p> <p>TOOL</p> <p>IDX</p>								

End drive units

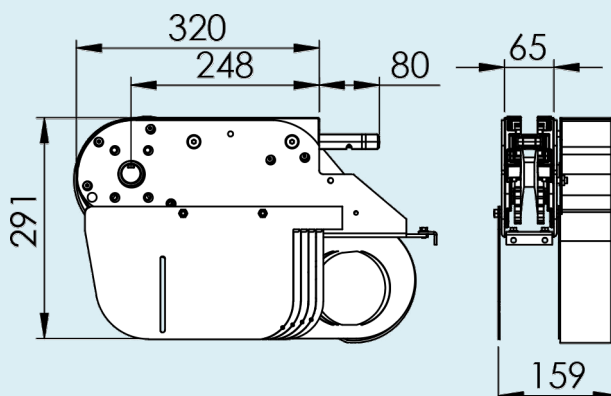


Direct drive

FLEB 0A65HL Drive unit
Transmission on left-hand side



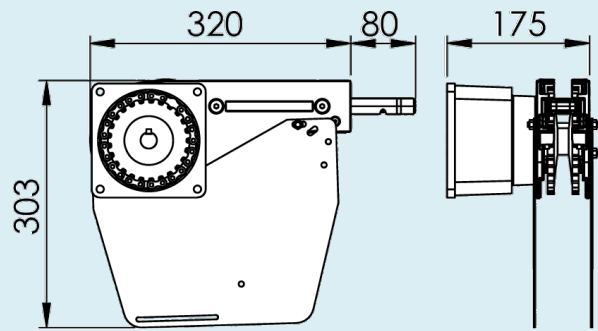
FLEB 0A65HR Drive unit
Transmission on right-hand side



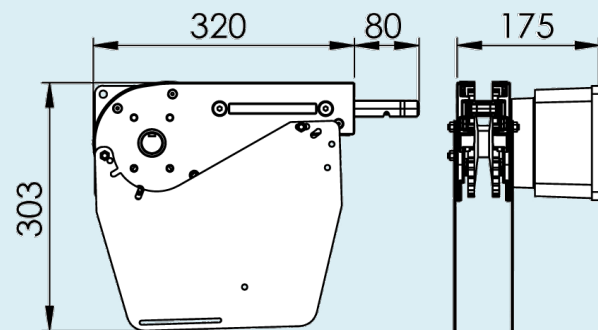
Maximum weight on conveyor : 150 kg
Maximum conveyor length : 40 M
Maximum conveyor speed : 60 M/min

End drive units

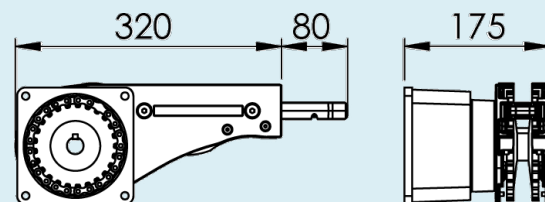
FLEB 0A65HLP Drive unit
Direct drive,
left-hand side



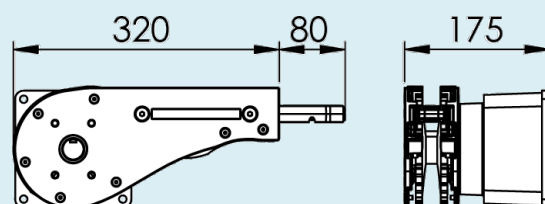
FLEB 0A65HRP Drive unit
Direct drive,
right-hand side



FLEB 0A65HLGP
Drive unit
Direct drive w/o slack,
left-hand side



FLEB 0A65HRGP
Drive unit
Direct drive w/o slack,
right-hand side



Maximum weight on conveyor : 150 kg
Maximum conveyor length : 40 M
Maximum conveyor speed : 60 M/min

F45

FT

FS

FL

FLP

F65

FM

FMP

F85

F85P

FH

FK

FKP

FB140

FB175

FB295

SPIRAL

FW

FLX

FMX

FHX

FBX175

FBX295

ACC

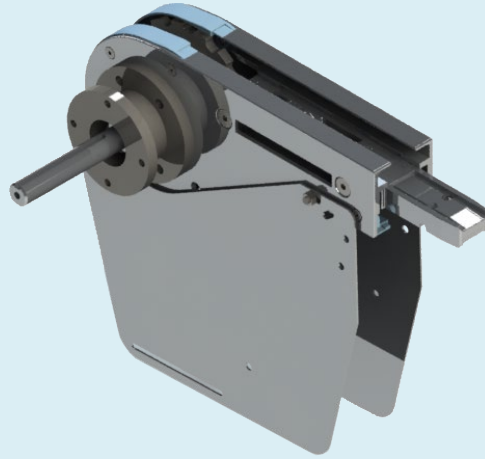
CA

FC

TOOL

IDX

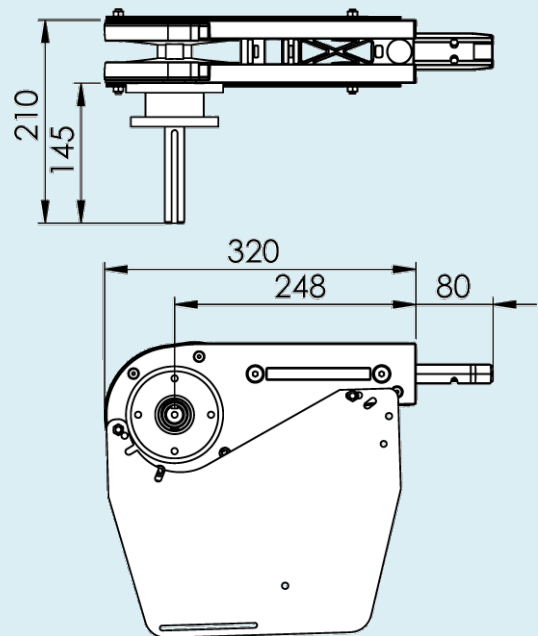
End drive units



FLEB 0A65HNL

Dia. 25 to 20

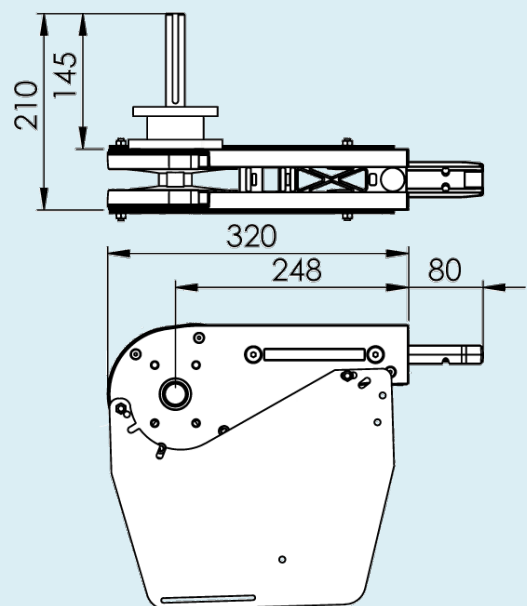
Drive unit
Direct drive
left-hand side
SEW SA37
SEW WA 30
SEW WA 20



FLEB 0A65HNR

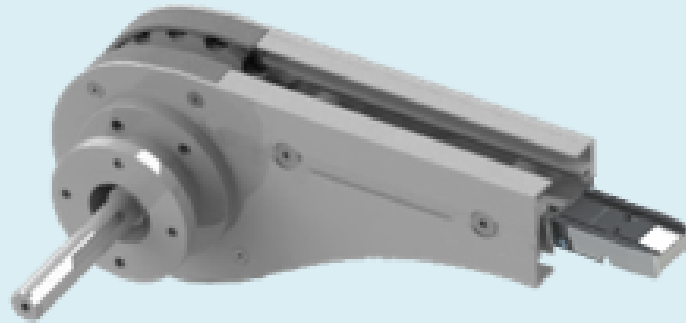
Dia. 25 to 20

Drive unit
Direct drive
left-hand side
SEW SA37
SEW WA 30
SEW WA 20



Maximum weight on conveyor : 150 kg
Maximum conveyor length : 40 M
Maximum conveyor speed : 60 M/min

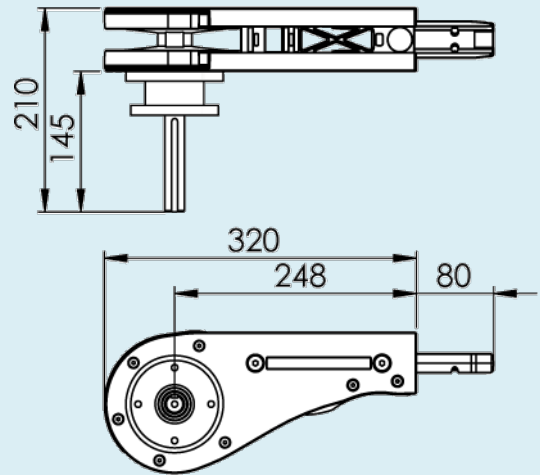
End drive units



FLEB 0A65HNLGP

Dia. 25 to 20

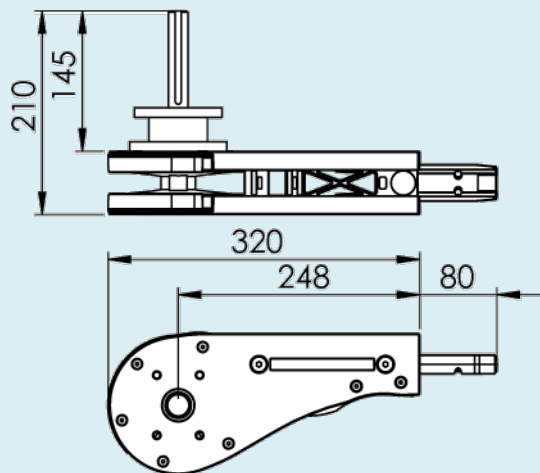
Drive unit
 Direct drive w/o slack
 left-hand side
 SEW SA37
 SEW WA30
 SEW WA 20



FLEB 0A65HNRGP

Dia. 25 to 20

Drive unit
 Direct drive w/o slack
 right-hand side
 SEW SA37
 SEW WA30
 SEW WA 20



Maximum weight on conveyor : 150 kg
 Maximum conveyor length : 40 M
 Maximum conveyor speed : 60 M/min

F45

FT

FS

FL

FLP

F65

FM

FMP

F85

F85P

FH

FK

FKP

FB140

FB175

FB295

SPIRAL

FW

FLX

FMX

FHX

FBX175

FBX295

ACC

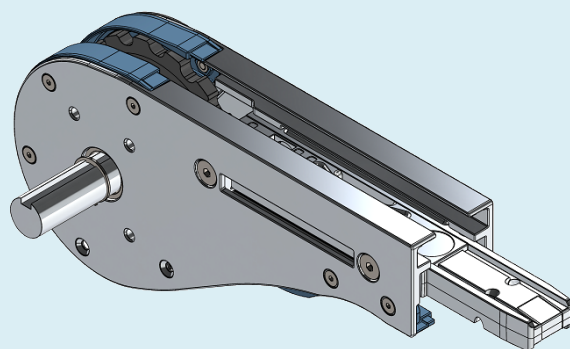
CA

FC

TOOL

IDX

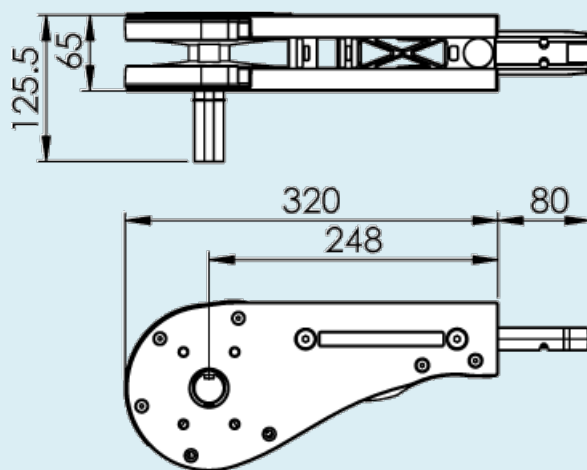
End drive units



FLEB 0A65HLU

Dia. 25

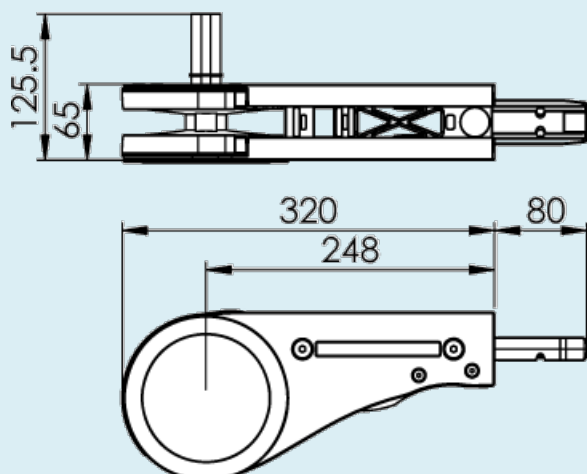
Basic unit
left-hand side



FLEB 0A65HRU

Dia. 25

Basic unit
right-hand side

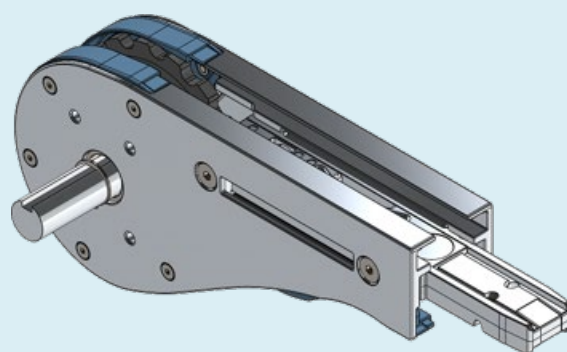


Maximum weight on conveyor : 150 kg

Maximum conveyor length : 40 M

Maximum conveyor speed : 60 M/min

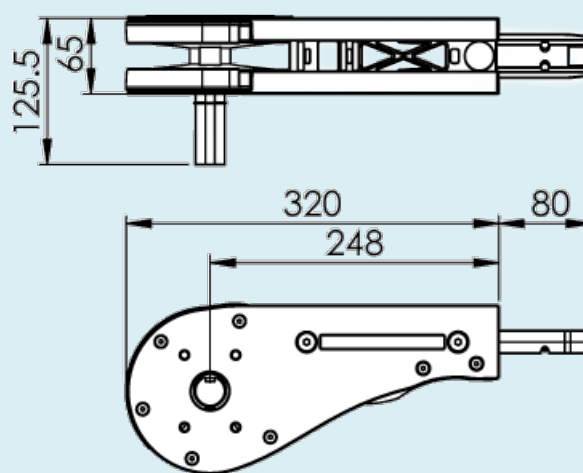
End drive units



FLEB 0A65HLGU

Dia. 25

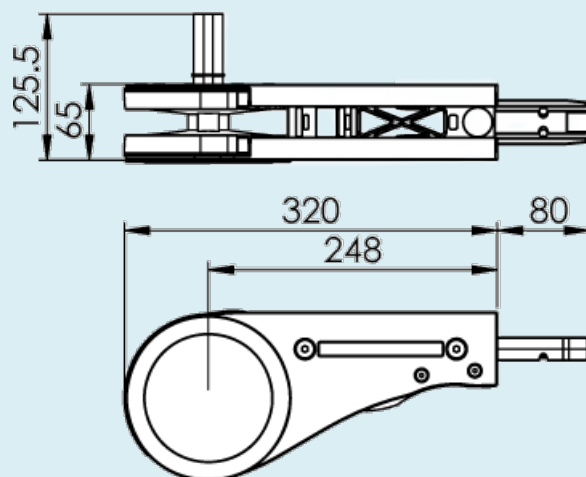
Basic unit
w/o slack
left-hand side



FLEB 0A65HRGU

Dia. 25

Basic unit
w/o slack
right-hand side



Maximum weight on conveyor : 150 kg

Maximum conveyor length : 40 M

Maximum conveyor speed : 60 M/min

F45

FT

FS

FL

FLP

F65

FM

FMP

F85

F85P

FH

FK

FKP

FB140

FB175

FB295

SPIRAL

FW

FLX

FMX

FHX

FBX175

FBX295

ACC

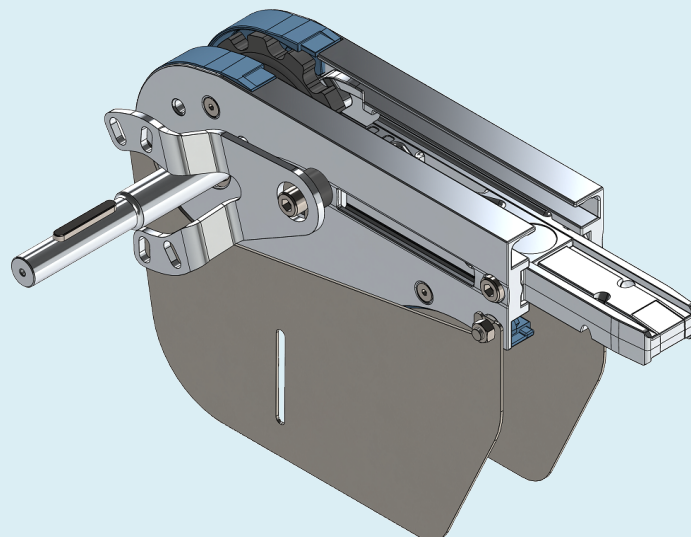
CA

FC

TOOL

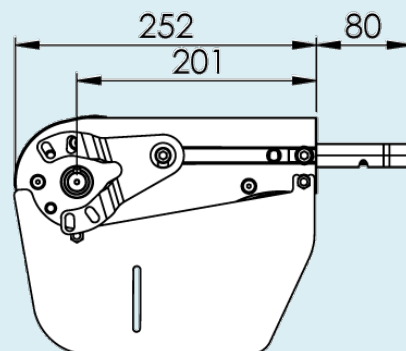
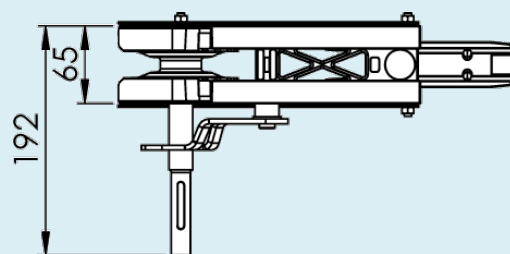
IDX

End drive units



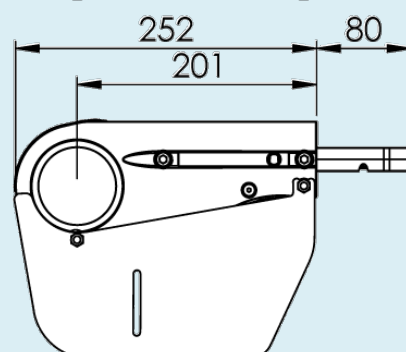
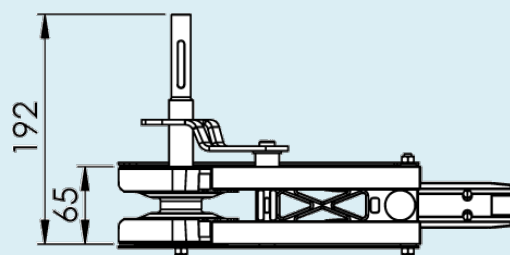
FLEB 0A65CNLP
Dia. 16

Basic unit
left-hand side



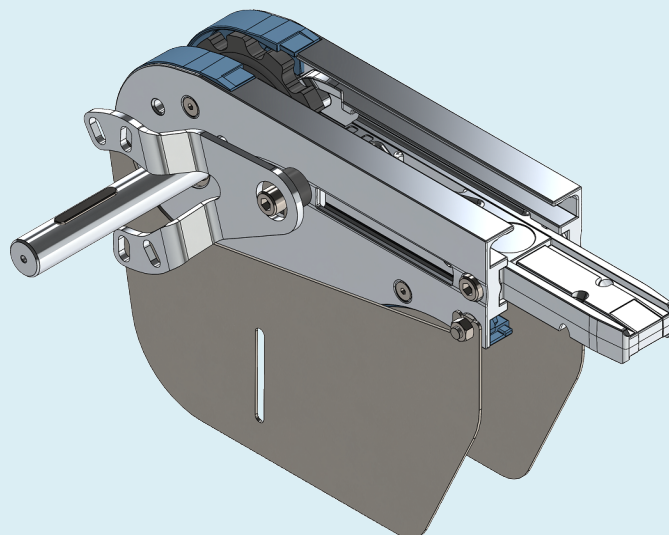
FLEB 0A65CNRP
Dia. 16

Basic unit
right-hand side



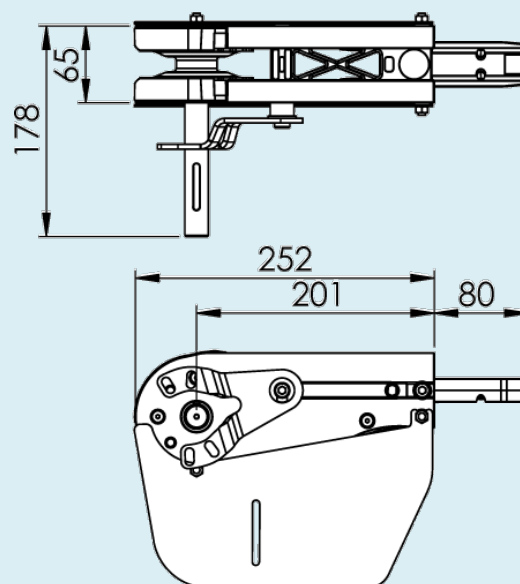
Maximum weight on conveyor : 150 kg
Maximum conveyor length : 40 M
Maximum conveyor speed : 60 M/min

End drive units



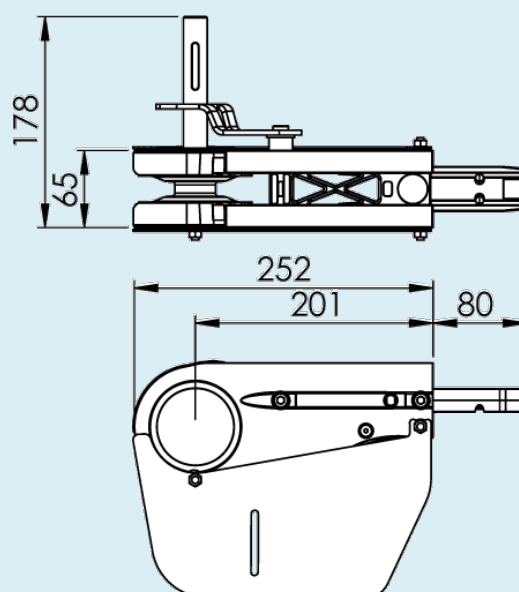
FLEB 0A65MNLP
Dia. 20

Basic unit
left-hand side



FLEB 0A65MNRP
Dia. 20

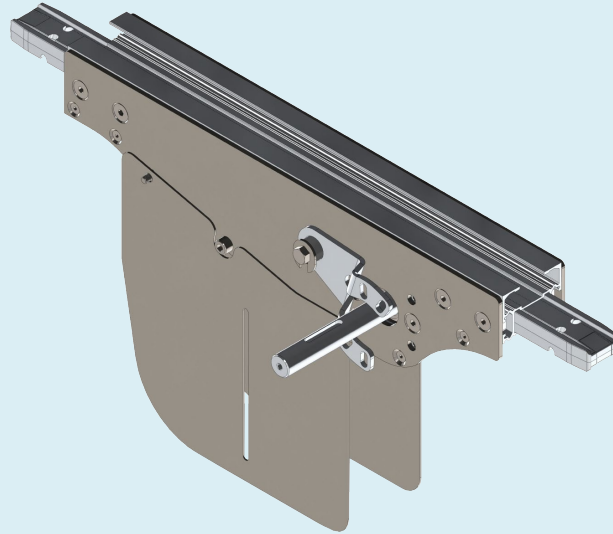
Basic unit
right-hand side



Maximum weight on conveyor : 150 kg
Maximum conveyor length : 40 M
Maximum conveyor speed : 60 M/min

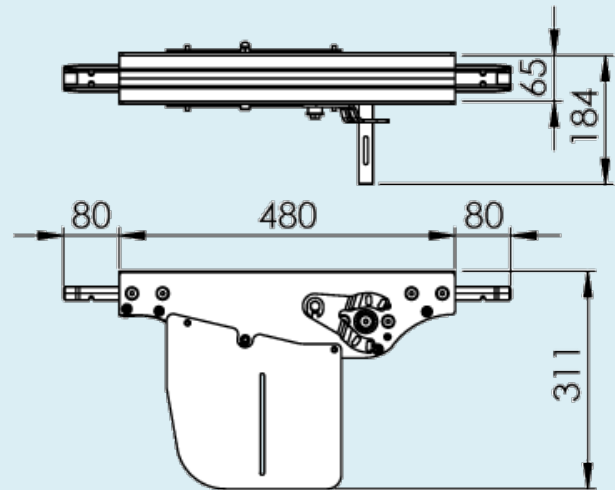
- F45
- FT
- FS
- FL
- FLP
- F65**
- FM
- FMP
- F85
- F85P
- FH
- FK
- FKP
- FB140
- FB175
- FB295
- SPIRAL
- FW
- FLX
- FMX
- FHX
- FBX175
- FBX295
- ACC
- CA
- FC
- TOOL
- IDX

Intermediate drive units



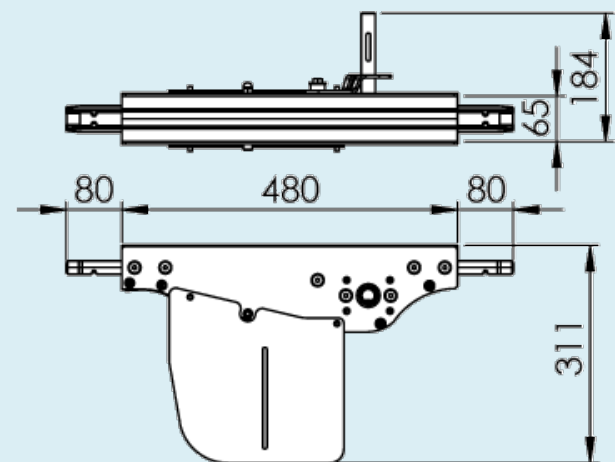
FLER 0A65MNL
Dia. 20

Basic unit
left-hand side



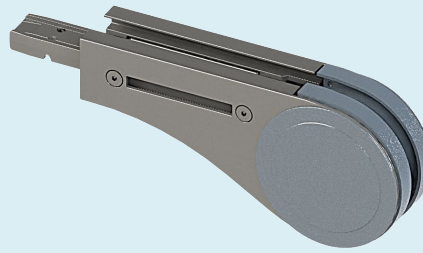
FLER 0A65MNR
Dia. 20

Basic unit
right-hand side



Maximum weight on conveyor : 150 kg
Maximum conveyor length : 40 M
Maximum conveyor speed : 25 M/min

Idler end units



F45

FT

FS

FL

FLP

F65

FM

FMP

F85

F85P

FH

FK

FKP

FB140

FB175

FB295

SPIRAL

FW

FLX

FMX

FHX

FBX175

FBX295

ACC

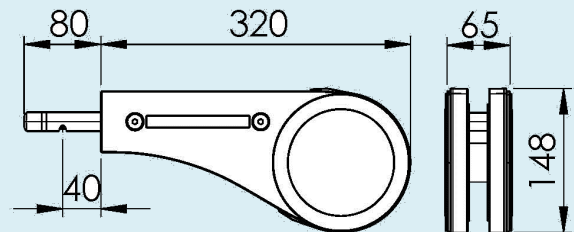
CA

FC

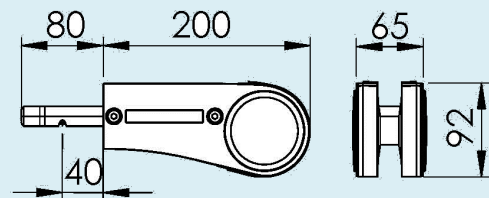
TOOL

IDX

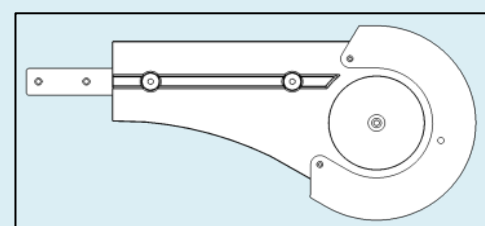
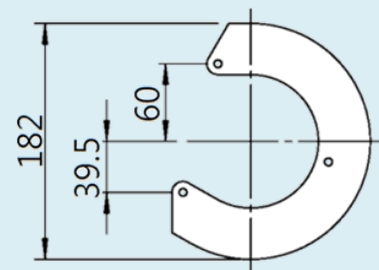
FLEJ A65 Idler end unit



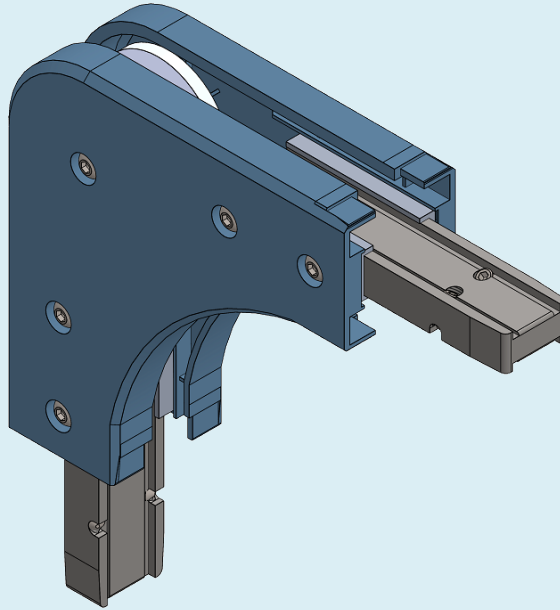
FLEJ A65S Idler end unit



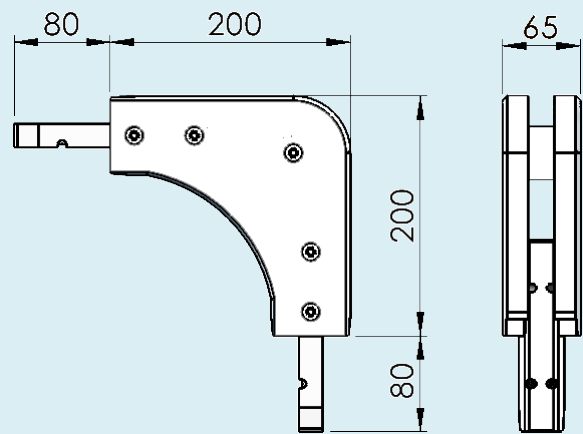
FLSJ 182 Protective cover for idler end nit



Idler end units



FLEK 90A65 Idler end unit, 90°



Horizontal wheel bends



F45

FT

FS

FL

FLP

F65

FM

FMP

F85

F85P

FH

FK

FKP

FB140

FB175

FB295

SPIRAL

FW

FLX

FMX

FHX

FBX175

FBX295

ACC

CA

FC

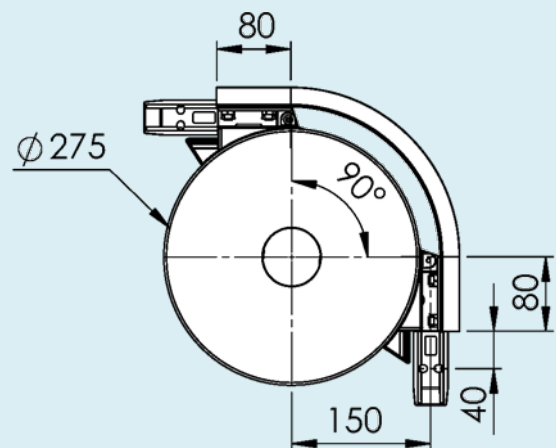
TOOL

IDX

Horizontal wheel bend, 90°

FLBH 90A65R150

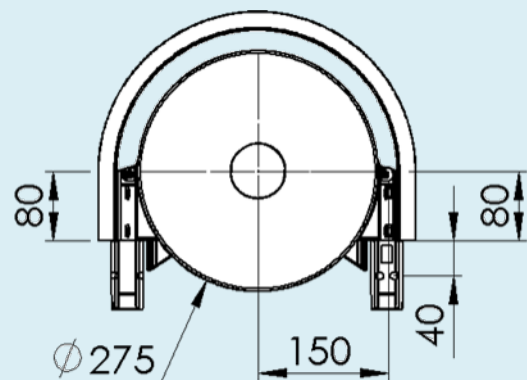
Radius to centre
of chain 150



Horizontal wheel bend, 180°

FLBH 180A65R150

Radius to centre
of chain 150

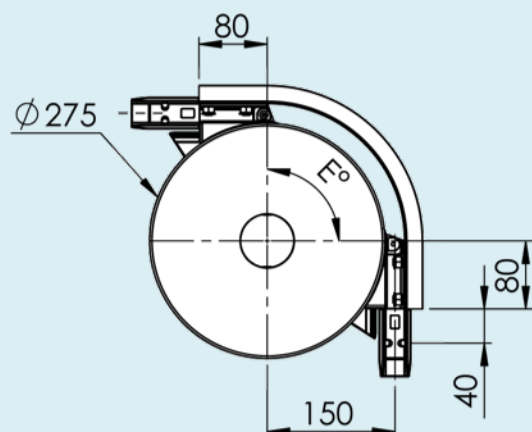


Horizontal wheel bend, 30~210°

FLBH EA65R150 R=150

The out bend is cut in the middle to
the desired angle and assembled
using connection strips.

The angle "E" must be specified
when ordering.



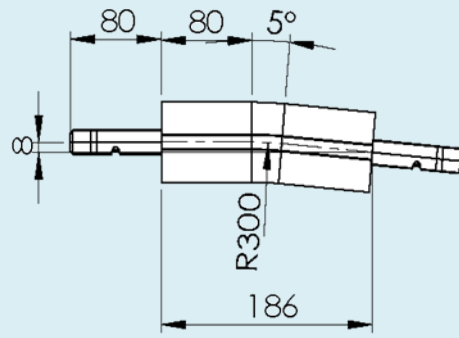
Vertical bends



Vertical bends

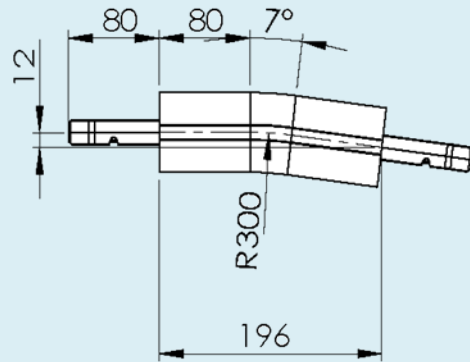
Vertical bend, 5°
Radius to centre of beam:

FLBV 5A65R300 R=300



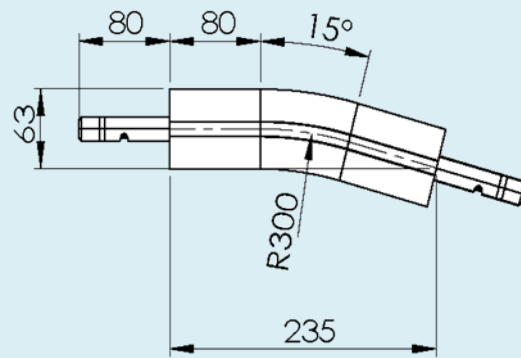
Vertical bend, 7°
Radius to centre of beam:

FLBV 7A65R300 R=300



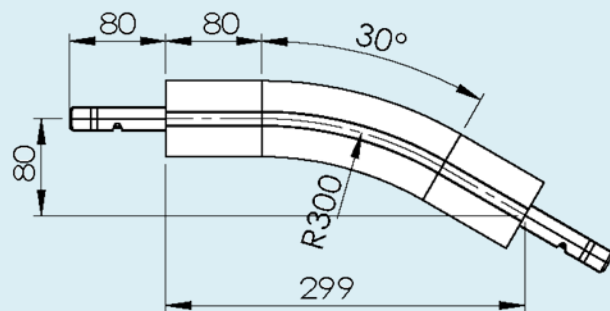
Vertical bend, 15°
Radius to centre of beam:

FLBV 15A65R300 R=300



Vertical bend, 30°
Radius to centre of beam:

FLBV 30A65R300 R=300



F45

FT

FS

FL

FLP

F65

FM

FMP

F85

F85P

FH

FK

FKP

FB140

FB175

FB295

SPIRAL

FW

FLX

FMX

FHX

FBX175

FBX295

ACC

CA

FC

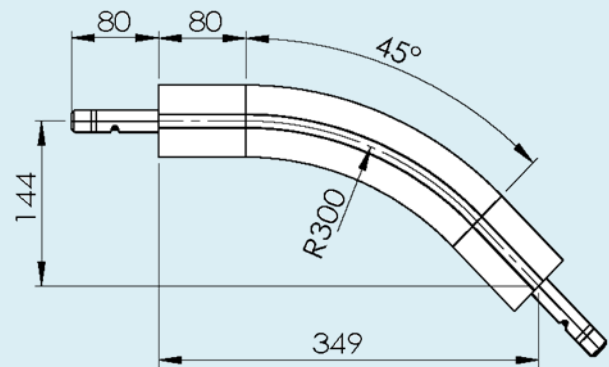
TOOL

IDX

Vertical bends

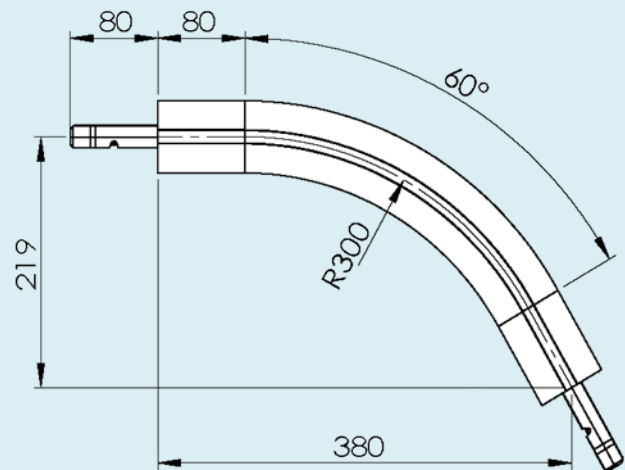
Vertical bend, 45°
Radius to centre of beam:

FLBV 45A65R300 R=300



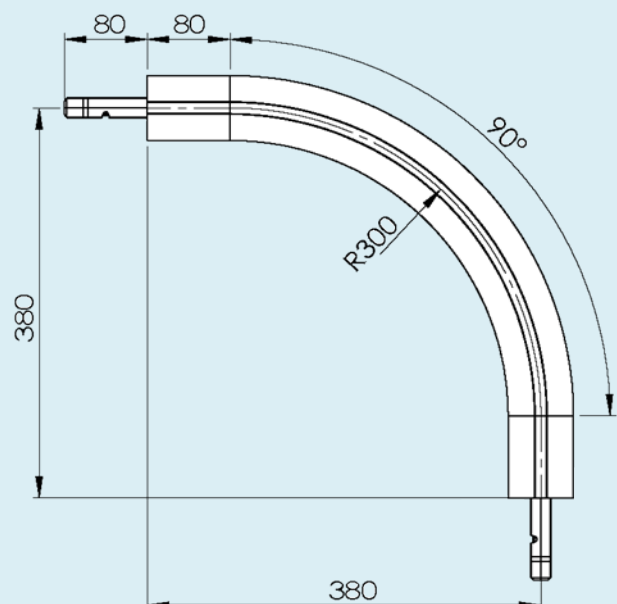
Vertical bend, 60°
Radius to centre of beam:

FLBV 60A65R300 R=300

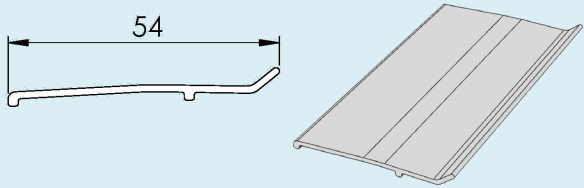
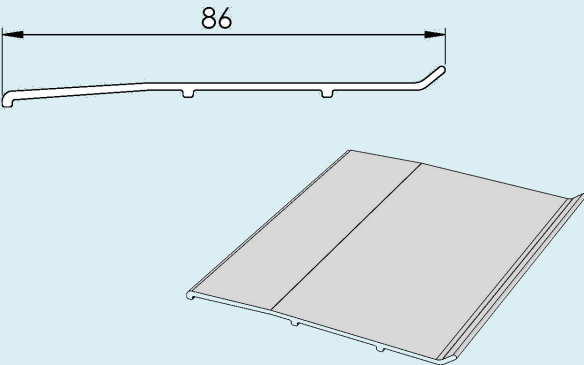
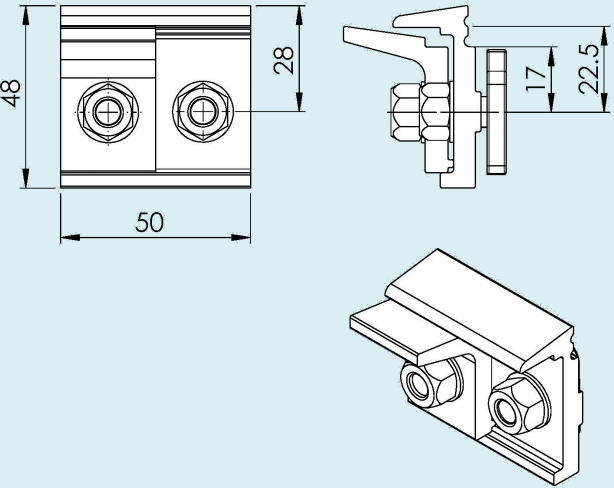


Vertical bend, 90°
Radius to centre of beam:

FLBV 90A65R300 R=300



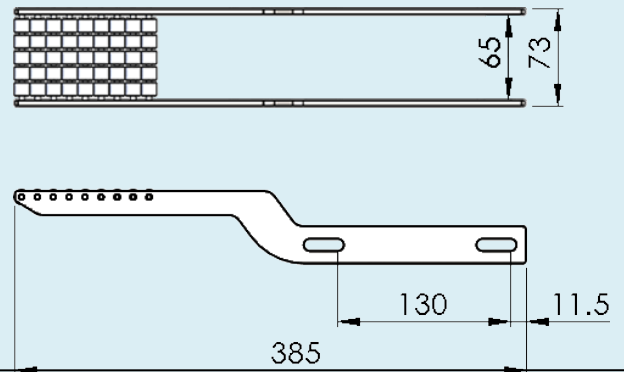
Drip catchers

<p>Drip catcher</p> <p>FHDS 3X53 Width 54 Length 3 m</p>		<p>F45</p> <p>FT</p> <p>FS</p> <p>FL</p> <p>FLP</p> <p>F65</p>
<p>Drip catcher</p> <p>FHDS 3X83 Width 86 Length 3 m</p>		<p>FM</p> <p>FMP</p> <p>F85</p> <p>F85P</p> <p>FH</p> <p>FK</p> <p>FKP</p> <p>FB140</p> <p>FB175</p>
<p>Drip catcher bracket assembly Including T-bolts and nuts</p> <p>FHDR 23</p>		<p>FB295</p> <p>SPIRAL</p> <p>FW</p> <p>FLX</p> <p>FMX</p> <p>FHX</p> <p>FBX175</p> <p>FBX295</p> <p>ACC</p> <p>CA</p> <p>FC</p> <p>TOOL</p> <p>IDX</p>

Roller bridge for F65 conveyor

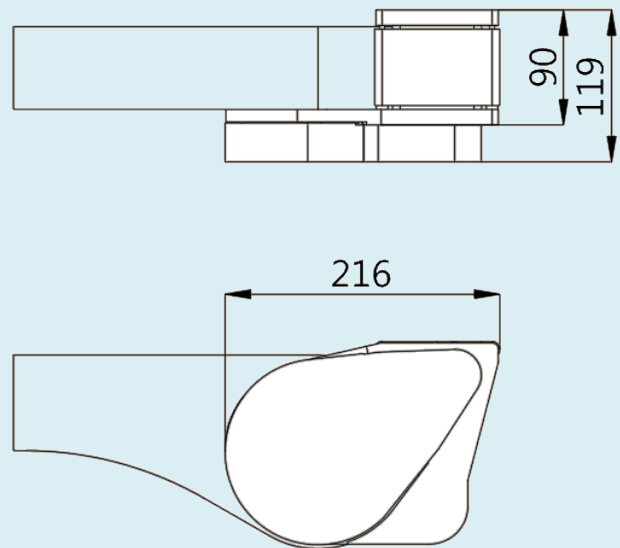
Roller bridge

Bridge-FL



Belt bridge

FLEF DBL



FLEF DBR

