

# Conveyor system FB140

F45

FT

FS

FL

FLP

F65

FM

FMP

F85

F85P

FH

FK

FKP

**FB140**

FB175

FB295

SPIRAL

FW

FLX

FMX

FHX

FBX175

FBX295

ACC

CA

FC

TOOL

IDX

Contents

Chains 3

Conveyor beam 5

End drive units 7

Idler unit 9

Horizontal plain bends 11

Vertical bends 13

FB-Support brackets 15

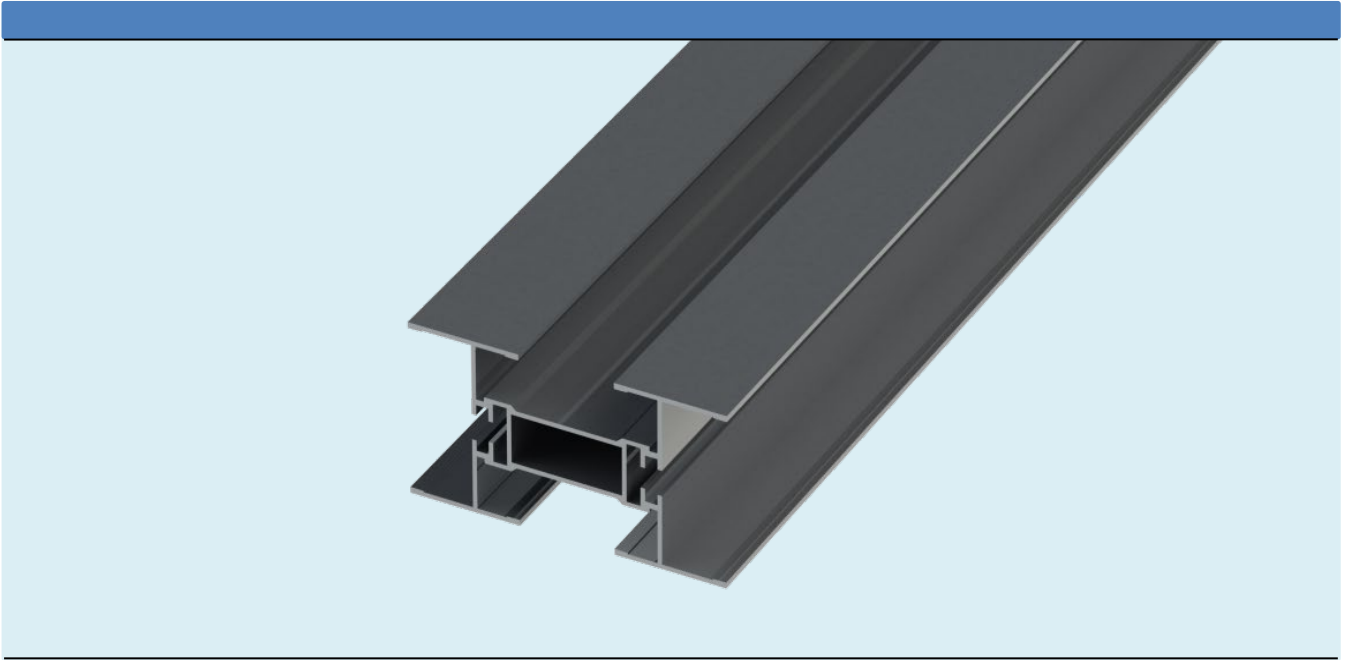
# Chains



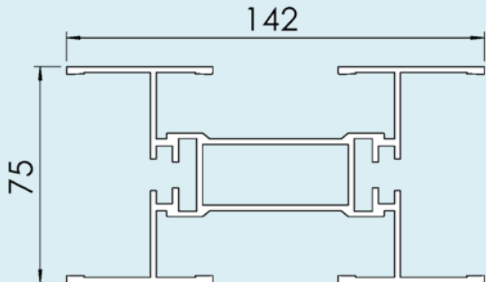
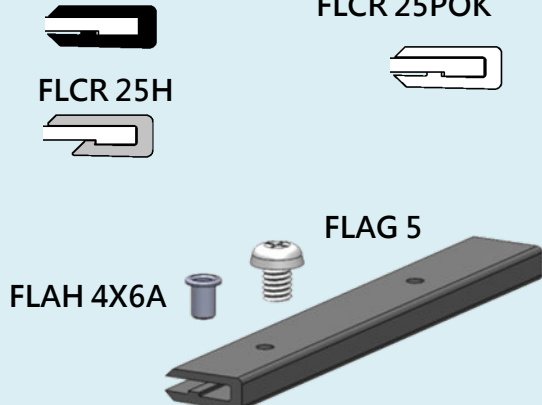
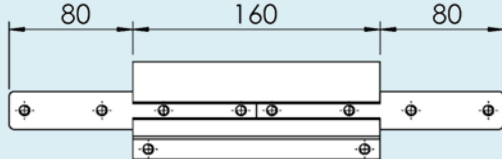
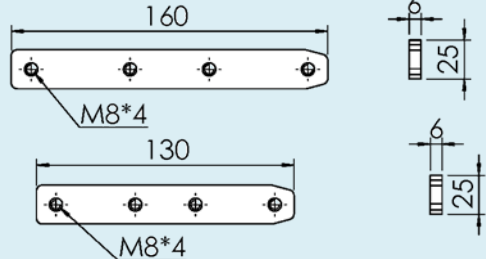
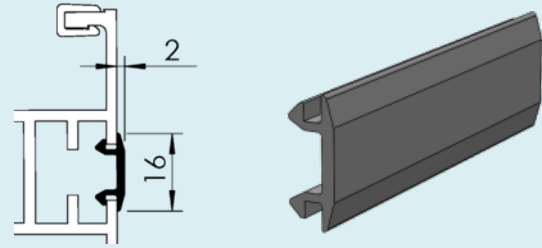
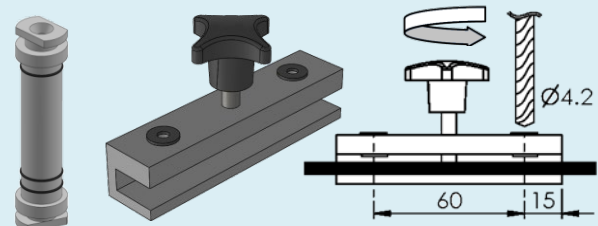
# Chains

			<b>F45</b>
<i>Plain chain</i>			<b>FT</b>
<b>FBTP 3A140A</b>	Plain chain Length 5 mt		<b>FS</b>
<b>FBTL 140A</b>	Plain link		<b>FL</b>
			<b>FLP</b>
			<b>F65</b>
			<b>FM</b>
			<b>FMP</b>
			<b>F85</b>
			<b>F85P</b>
<i>Friction top chain</i>			<b>FH</b>
<b>FBTP 3A140AF</b>	Plain chain Length 5 mt		<b>FK</b>
<b>FBTL 140AF</b>	Plain link		<b>FKP</b>
			<b>FB140</b>
			<b>FB175</b>
			<b>FB295</b>
			<b>SPIRAL</b>
			<b>FW</b>
			<b>FLX</b>
<i>Tools and accessories</i>			<b>FMX</b>
<b>FMTT 13X16</b>	Plastic pivot		<b>FHX</b>
<b>FMTD 6X50</b>	Steel pin		<b>FBX175</b>
<b>FBMJ 6P</b>	Pin insertion tool		<b>FBX295</b>
<b>FBMJ 6</b>	Pin insertion tool		<b>ACC</b>
<b>FDSS 450</b>	Silicone-based lubricant		<b>CA</b>
			<b>FC</b>
			<b>TOOL</b>
			<b>IDX</b>

# Conveyor beam



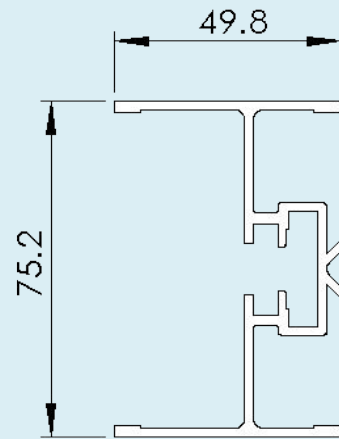
# Conveyor beam

<p>Beam</p> <p><b>FBCB 3A140</b>      Length 3 m</p>		<p><b>F45</b></p> <p><b>FT</b></p> <p><b>FS</b></p> <p><b>FL</b></p> <p><b>FLP</b></p> <p><b>F65</b></p>
<p>Slide rail</p> <p><b>FLCR 25</b>      Length 25 m  <b>FLCR 25U</b>      HDPE Black  <b>FLCR 25P</b>      UHMW White  <b>FLCR 25POK</b>    PVDF White  <b>FLCR 25H</b>      POK  <b>FLCR 25E</b>      HDPE+PA6 Gray  <b>FLCR 25E</b>      UHMW conductive                                               Black</p> <p><b>FLAH 4X6A</b>      Aluminium rivet</p> <p><b>FLAG 5</b>          Plastic screw</p>	<p><b>FLCR 25/FLCR 25E</b>      <b>FLCR 25U/FLCR 25P</b>  <b>FLCR 25H</b>                      <b>FLCR 25POK</b></p> 	<p><b>FM</b></p> <p><b>FMP</b></p> <p><b>F85</b></p> <p><b>F85P</b></p> <p><b>FH</b></p> <p><b>FK</b></p> <p><b>FKP</b></p> <p><b>FB140</b></p>
<p><b>FBCC 160A142</b>    Beam section for  chain installation  Including connection  strips and screws</p>		<p><b>FB175</b></p> <p><b>FB295</b></p> <p><b>SPIRAL</b></p> <p><b>FW</b></p>
<p>Connecting strip with set screws</p> <p><b>FLCJ 6X160</b>      Length 160 mm  <b>FLCJ 6X130</b>      Length 130 mm</p>		<p><b>FLX</b></p> <p><b>FMX</b></p> <p><b>FHX</b></p> <p><b>FBX175</b></p> <p><b>FBX295</b></p>
<p>T-slot cover</p> <p><b>FLAB 50</b>          Length 50 m</p>		<p><b>ACC</b></p> <p><b>CA</b></p> <p><b>FC</b></p> <p><b>TOOL</b></p> <p><b>IDX</b></p>
<p><b>F3920500</b>          Drill fixture for slide  rail</p> <p><b>FMMR 140</b>          Mounting tool</p>	<p><b>FMMR 140</b>      <b>F3920500</b></p> 	

# Conveyor beam

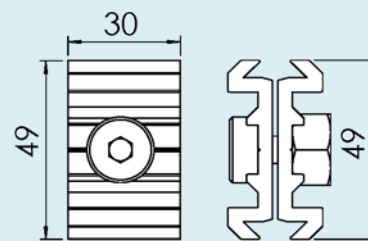
Half beam

**FBCB 3AH140**      Length 3 mt

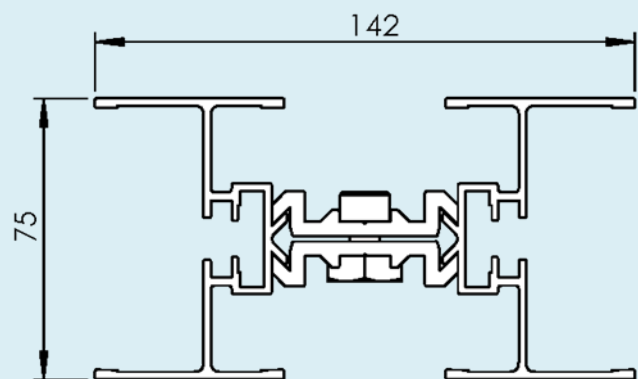


Beam clip

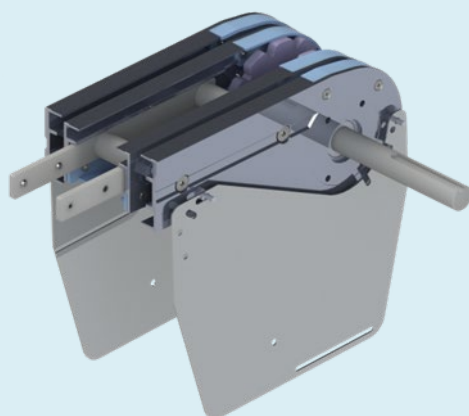
**FMCE 49X30**



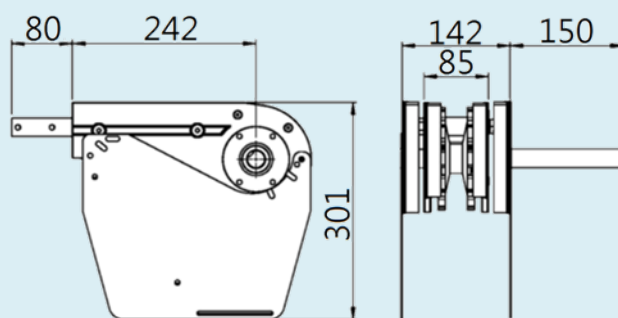
Split Conveyor beam assembled  
Length 3mt



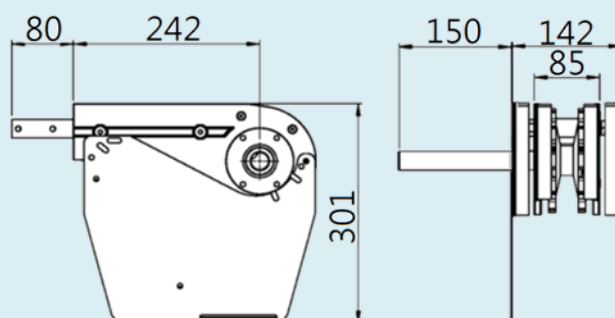
# End drive units



**FBEB 0A140LU** Basic unit  
 Dia. 25mm  
 Transmission on left-hand side



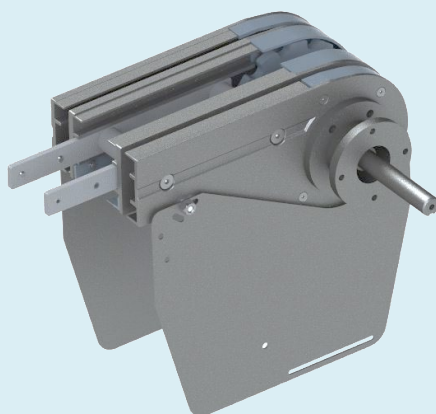
**FBEB 0A140RU** Basic unit  
 Dia. 25mm  
 Transmission on right-hand side



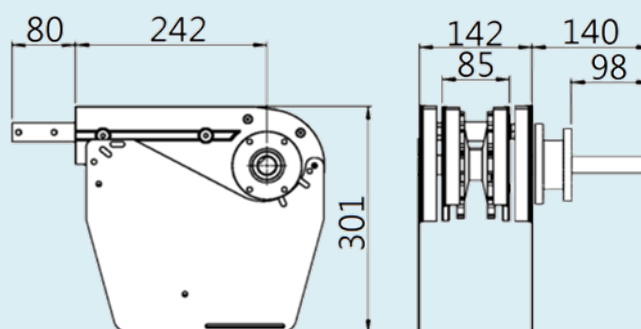
Maximum weight on conveyor : 300 kg  
 Maximum conveyor length : 30 M  
 Maximum conveyor speed : 60 M/min

- F45
- FT
- FS
- FL
- FLP
- F65
- FM
- FMP
- F85
- F85P
- FH
- FK
- FKP
- FB140**
- FB175
- FB295
- SPIRAL
- FW
- FLX
- FMX
- FHX
- FBX175
- FBX295
- ACC
- CA
- FC
- TOOL
- IDX

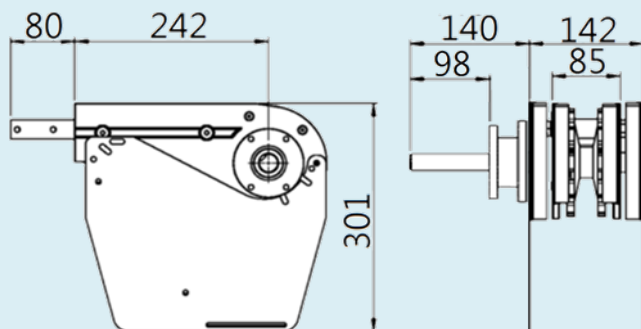
# End drive units



**FBEB 0A140HNL** Drive unit  
 Dia. 25mm to 20mm  
 Transmission on left-hand side  
 SEW SA37  
 SEW WA30  
 SEW WA 20



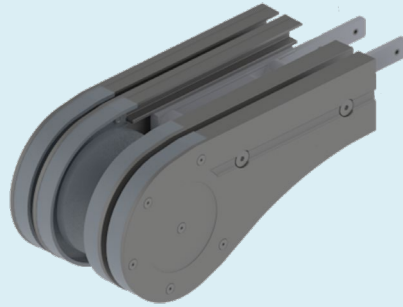
**FBEB 0A140HNR** Drive unit  
 Dia. 25mm to 20mm  
 Transmission on right-hand side  
 SEW SA37  
 SEW WA30  
 SEW WA 20



Maximum weight on conveyor : 300 kg  
 Maximum conveyor length : 30 M  
 Maximum conveyor speed : 60 M/min

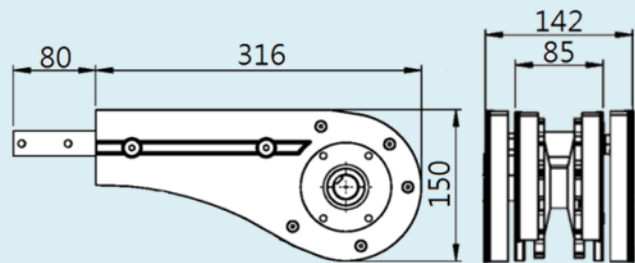


# Idler end units



FBEJ 140

Idler end unit



F45

FT

FS

FL

FLP

F65

FM

FMP

F85

F85P

FH

FK

FKP

**FB140**

FB175

FB295

SPIRAL

FW

FLX

FMX

FHX

FBX175

FBX295

ACC

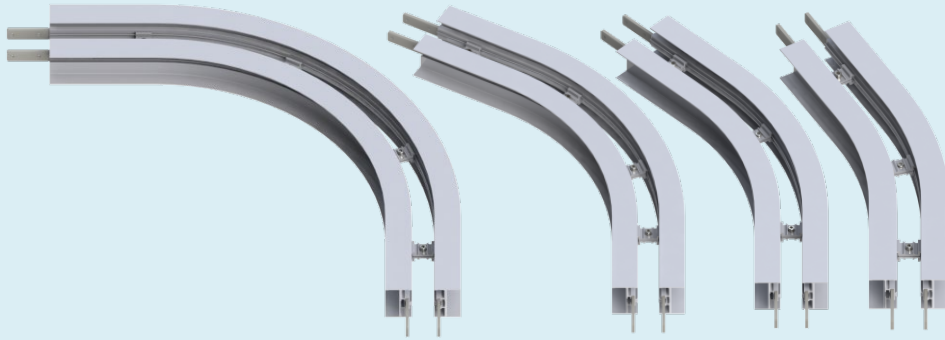
CA

FC

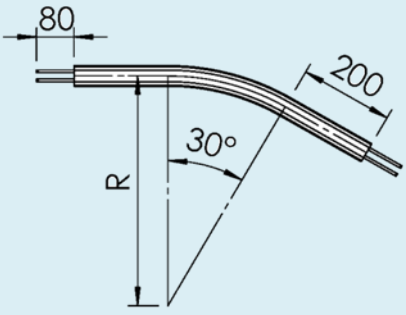
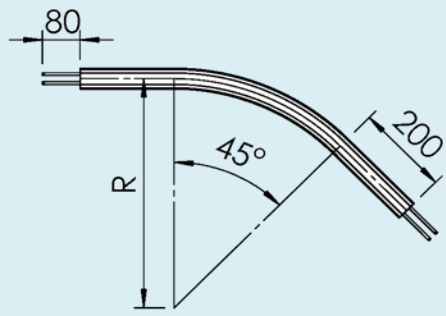
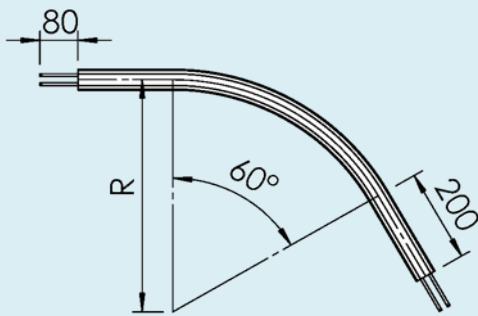
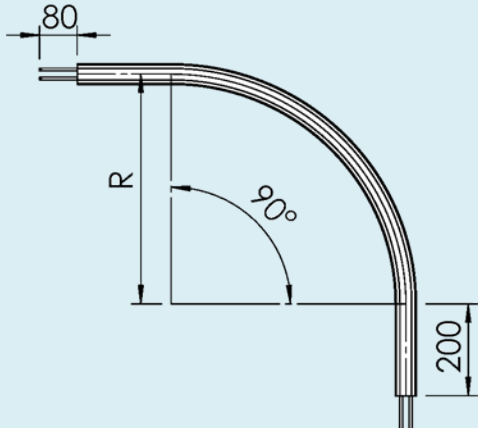
TOOL

IDX

# Horizontal plain bends

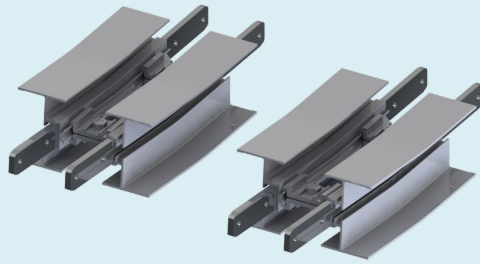


# Horizontal plain bends

<p>Horizontal plain bend, 30° Radius to centre of beam:</p> <p><b>FBBP 30A140R500</b>      R=500 mm  <b>FBBP 30A140R700</b>      R=700 mm  <b>FBBP 30A140R1000</b>    R=1000mm</p>		<p><b>F45</b> <b>FT</b> <b>FS</b> <b>FL</b> <b>FLP</b> <b>F65</b> <b>FM</b></p>
<p>Horizontal plain bend, 45° Radius to centre of beam:</p> <p><b>FBBP 45A140R500</b>      R=500 mm  <b>FBBP 45A140R700</b>      R=700 mm  <b>FBBP 45A140R1000</b>    R=1000mm</p>		<p><b>FMP</b> <b>F85</b> <b>F85P</b> <b>FH</b> <b>FK</b> <b>FKP</b> <b>FB140</b></p>
<p>Horizontal plain bend, 60° Radius to centre of beam:</p> <p><b>FBBP 60A140R500</b>      R=500 mm  <b>FBBP 60A140R700</b>      R=700 mm  <b>FBBP 60A140R1000</b>    R=1000mm</p>		<p><b>FB175</b> <b>FB295</b> <b>SPIRAL</b> <b>FW</b> <b>FLX</b> <b>FMX</b> <b>FHX</b></p>
<p>Horizontal plain bend, 90° Radius to centre of beam:</p> <p><b>FBBP 90A140R500</b>      R=500 mm  <b>FBBP 90A140R700</b>      R=700 mm  <b>FBBP 90A140R1000</b>    R=1000mm</p>		<p><b>FBX175</b> <b>FBX295</b> <b>ACC</b> <b>CA</b> <b>FC</b> <b>TOOL</b> <b>IDX</b></p>

\* Note: Special angles on request.

# Vertical bends

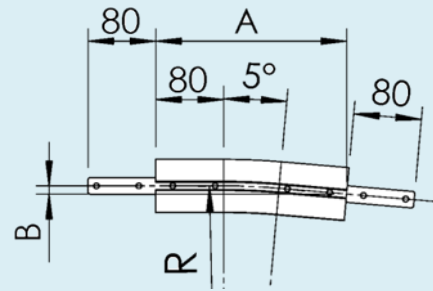


# Vertical bends

Vertical bend, 5°  
Radius to centre of beam:

**FBBV 5A140R400** R=400 mm

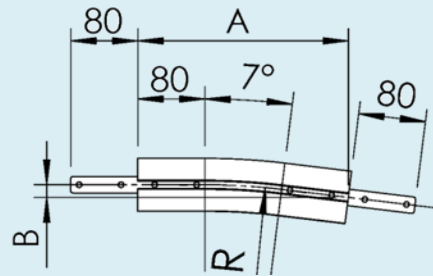
	R	A	B
FBBV 5A140R400	400	195	9



Vertical bend, 7°  
Radius to centre of beam:

**FBBV 7A140R400** R=400 mm

	R	A	B
FBBV 7A140R400	400	208	13



F45

FT

FS

FL

FLP

F65

FM

FMP

F85

F85P

FH

FK

FKP

**FB140**

FB175

FB295

SPIRAL

FW

FLX

FMX

FHX

FBX175

FBX295

ACC

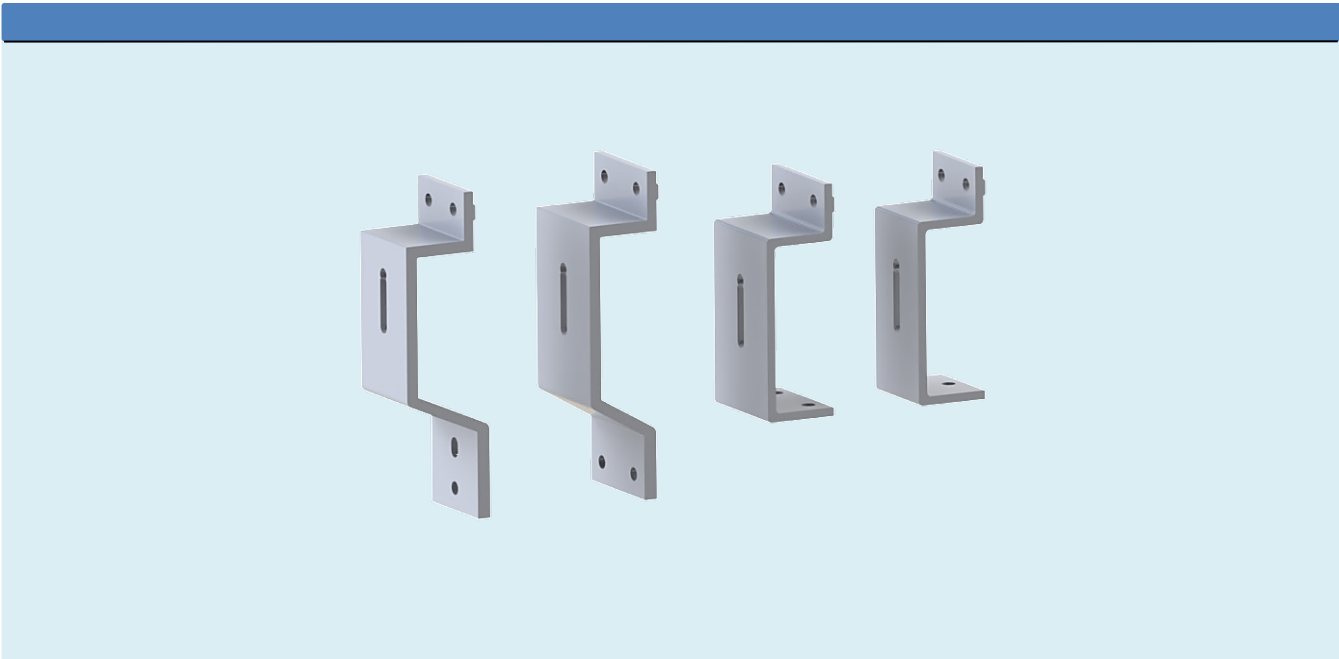
CA

FC

TOOL

IDX

# FB-Support brackets



# FB-Support brackets

<p><b>FBCT 21X135A</b>      Beam support bracket, for 64 mm crossing support beam</p>		<p><b>F45</b> <b>FT</b> <b>FS</b> <b>FL</b> <b>FLP</b> <b>F65</b> <b>FM</b> <b>FMP</b></p>
<p><b>FBCT 21X135</b>      Beam support bracket, for 88 mm crossing support beam</p>		<p><b>F85</b> <b>F85P</b> <b>FH</b> <b>FK</b> <b>FKP</b> <b>FB140</b> <b>FB175</b></p>
<p><b>FBCS 64</b>      Beam support Bracket, for 64 mm vertical support beam</p>		<p><b>FB295</b> <b>SPIRAL</b> <b>FW</b> <b>FLX</b> <b>FMX</b> <b>FHX</b> <b>FBX175</b> <b>FBX295</b> <b>ACC</b></p>
<p><b>FBCS 88</b>      Beam support Bracket, for 88 mm vertical support beam</p>		<p><b>CA</b> <b>FC</b> <b>TOOL</b> <b>IDX</b></p>

